

RIVESTIMENTI

ОБИВКА/ REVÊTEMENTS



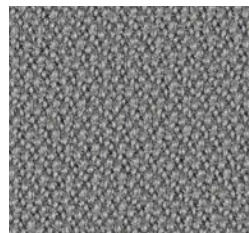
CAT_A

POLI

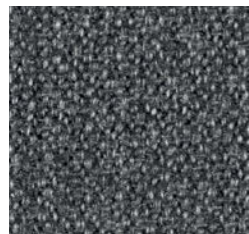
100% Полипропилен F.R.
Плотность: 250 gr/m²
Martindale 50.000 cicli
Ignifugo classe 1

100% Polypropylene F.R.
Weight: 250 gr/m²
Martindale 50.000 turns
Fire-retardant class 1 (one)

100% Polypropylene F.R.
Poids: 250 gr/m²
Martindale 50.000 cycles
Ignifuge classe 1



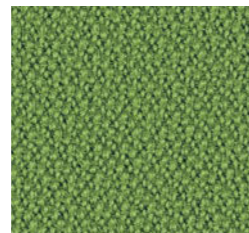
475 - Серый
Grey | Gris



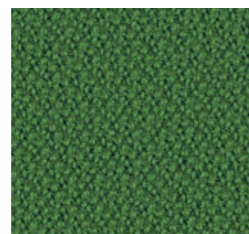
476 - Серый Смешанный
Melange Grey | Gris Mélange



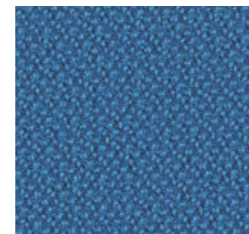
477 - Черный
Black | Noir



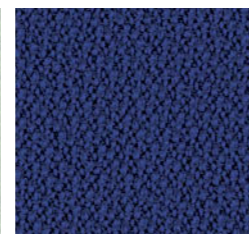
478 - Светло-зеленый
Light Green | Vert Clair



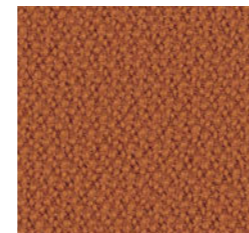
479 - Зеленый
Green | Vert



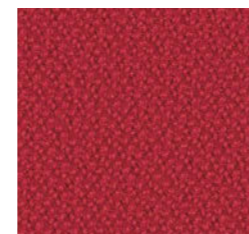
480 - Лазурь
Azure | Azur



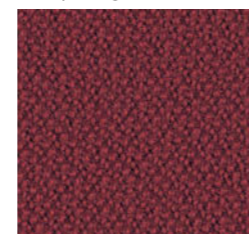
481 - Синий
Blue | Bleu



482 - Оранжевый
Orange | Orange



483 - Красный
Red | Rouge



484 - Бордовый
Bordeaux | Bordeaux

CAT_B

ECO-PELLE

Состав основы:
65% Полистер
35% Хлопок Общий
состав:
85% ПВХ
10% Полистер
5% Хлопок
Плотность: 600 gr/m²
Martindale 51.200 cicli
Ignifugo classe 1

Fibrous composition
65% Polyester
35% Cotton
Global composition:
85% PVC
10% Polyester
5% Cotton
Weight: 600 gr/m²
Martindale 51.200 turns
Fire-retardant class 1 (one)

Composition fibreuse:
65% Polyester
35% Coton
Composition globale:
85% PVC
10% Polyester
5% Coton
Poids: 600 gr/m²
Martindale 51.200 cycles
Ignifuge classe 1



503 - Белый
White | Blanc



507 - Слоновая кость
Ivory | Ivoire



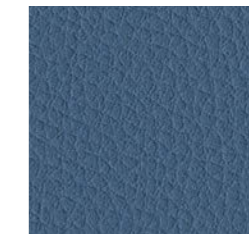
511 - Ярко-зеленый
Acid Green | Vert Acide



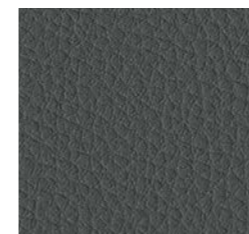
504 - Серый
Grey | Gris



508 - Табачный
Tobacco | Tabac



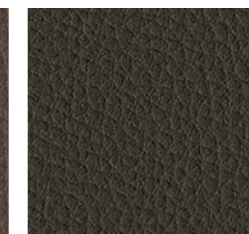
513 - Темно-синий
Navy Blue | Bleu Aviateur



505 - Шифер
Slate | Ardoise



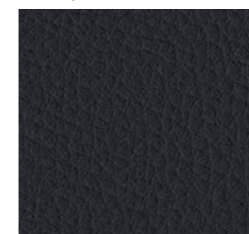
509 - Коричневый
Brown | Marron



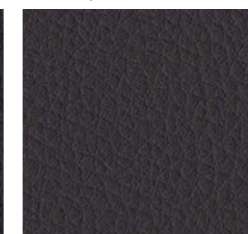
512 - Зеленый мох
Moss Green | Vert Mousse



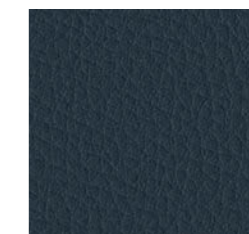
516 - Красный
Red | Rouge



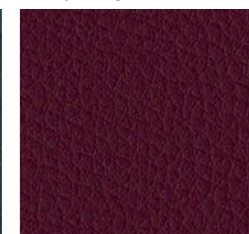
506 - Черный
Black | Noir



510 - Темно-коричневый
Dark Brown | Marron Foncé



514 - Синий
Blue | Bleu



517 - Гранат
Garnet | Grenat

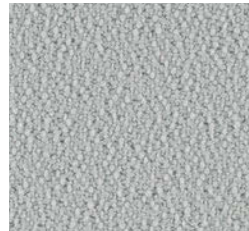
CAT_B

CREPE

100% Полистер
FR-TREVIRA CS
Плотность: 330 gr/m²
Martindale 100.000
cicli Ignifugo classe 1

100% Polyester
FR-TREVIRA CS
Weight: 330 gr/m²
Martindale 100.000 turns
Fire-retardant class 1 (one)

100% Polyester
FR-TREVIRA CS
Poids: 330 gr/m²
Martindale 100.000 cycles
Ignifuge classe 1



522 - Светло-серый
Light Grey | Gris Clair



525 - Слоновая кость
Ivory | Ivoire



523 - Темно-Серый
Dark Grey | Gris Foncé



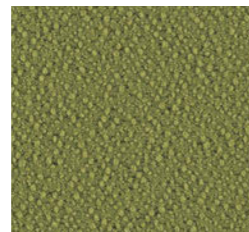
526 - Ореховый
Hazel | Noisette



524 - Черный
Black | Noir



527 - Солод
Malt | Malt



528 - Ярко-зеленый
Acid Green | Vert Acide



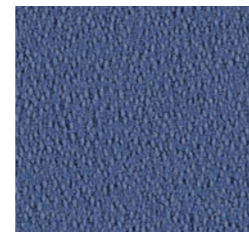
529 - Маслянистый
Petroleum | Huile



530 - Арктический
Arctic | Arctique



531 - Светло-синий
Light Bue | Bleu Clair



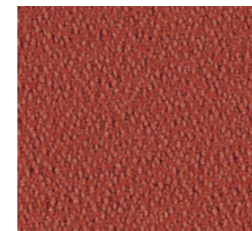
532 - Кобальт
Cobalt | Cobalt



533 - Синий
Blue | Bleu



534 - Желтый
Yellow | Jaune



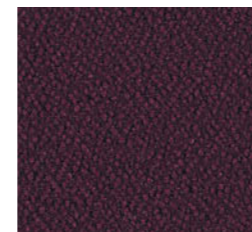
535 - Оранжевый
Orange | Orange



536 - Красное вино
Wine Red | Rouge Vin



537 - Красный
Red | Rouge



538 - Слива
Plum | Prune

CAT_D

STRETCH

100% Полистер
FR RICICLATO
Плотность: 340 gr/m²
Martindale 50.000 cicli
Ignifugo classe 1

100% Polyester FR
RECYCLED
Weight: 340 gr/m²
Martindale 50.000 turns
Fire-retardant class 1 (one)

100% Polyester
FR RECYCLÉ
Poids: 340 gr/m²
Martindale 50.000 cycles
Ignifuge classe 1



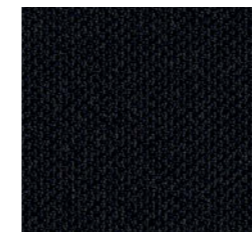
585 - Слоновая кость
Ivory | Ivoire



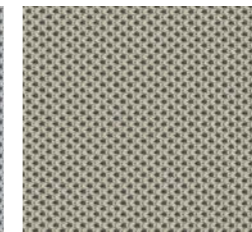
586 - Серый
Grey | Gris



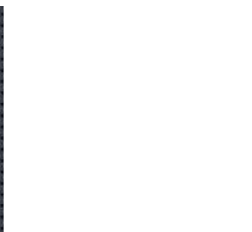
587 - Антрацит
Anthracite | Anthracite



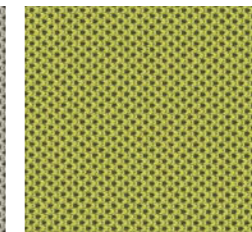
588 - Черный
Black | Noir



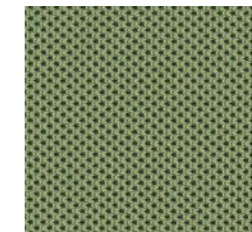
589 - Серо-бежевый
Grey Beige | Gris Tourterelle



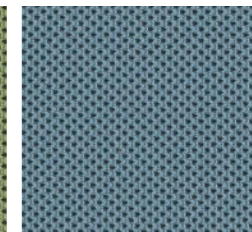
590 - Коричневый
Brown | Marron



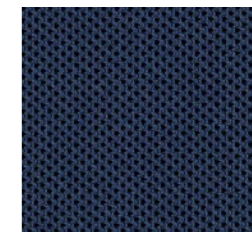
591 - Ярко-зеленый
Acid Green | Vert Acide



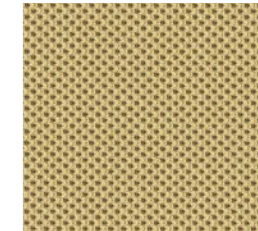
592 - Зеленое дерево
Wood Green | Vert Forêt



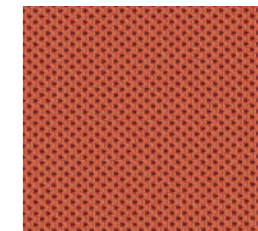
593 - Лазурь
Sky Blue | Bleu Sky



594 - Синий
Blue | Bleu



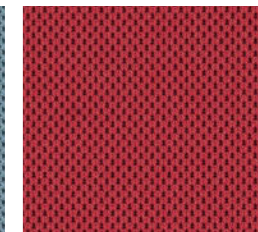
595 - Фрезия Желтая
Freesia Yellow | Jaune Freesia



596 - Оранжевый
Orange | Orange



597 - Красный
Red | Rouge



598 - Амарант
Amaranth | Amarante

CAT_D

MELANGE

100% Полистер
FR RICICLATO
Плотность: 340 gr/m²
Martindale 50.000 cicli
Ignifugo classe 1

100% Polyester
FR RECYCLED
Weight: 340 gr/m²
Martindale 50.000 turns
Fire-retardant class 1 (one)

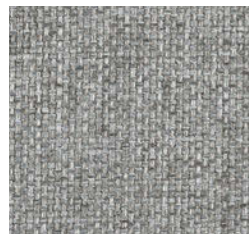
100% Polyester
FR RECYCLÉ
Poids: 340 gr/m²
Martindale 50.000 cycles
Ignifuge classe 1



603 - Ясень
Ash | Cendre



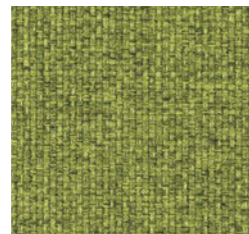
611 - Арктический
Arctic | Arctique



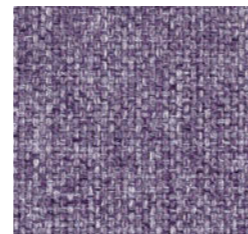
604 - Серый
Grey | Gris



606 - Серо-бежевый
Grey Beige | Gris Tourterelle



608 - Ярко-зеленый
Acid Green | Vert Acide



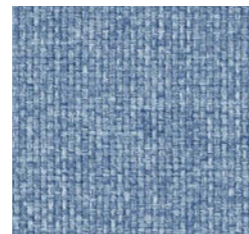
614 - Петунья
Petunia | Pétunia



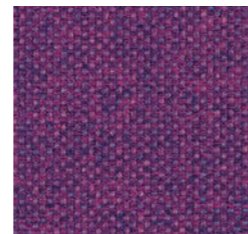
605 - Дымчатый
Smoke | Fumée



609 - Зеленый мох
Moss Green | Vert Mousse



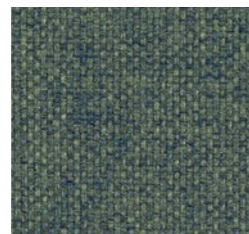
612 - Лазурь
Azure | Azur



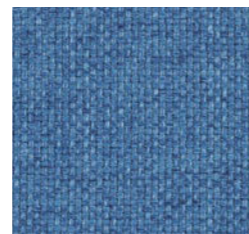
615 - Смородина
Currant | Groseille



607 - Ореховый
Hazel | Noisette



610 - Темно-зеленый
Dark Green | Vert Foncé



613 - Кобальт
Cobalt | Cobalt



616 - Гранат
Garnet | Grenat

CAT_D

TREVI

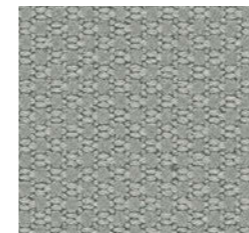
100% Полистер
FR TREVIRA CS
Плотность: 450 gr/m²
Martindale 70.000 cicli
Ignifugo classe 1

100% Polyester FR
TREVIRA CS
Weight: 450 gr/m²
Martindale 70.000 turns
Fire-retardant class 1 (one)

100% Polyester FR
TREVIRA CS
Poids: 450 gr/m²
Martindale 70.000 cycles
Ignifuge classe 1



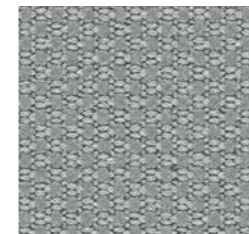
633 - Охра
Ocher | Ocre



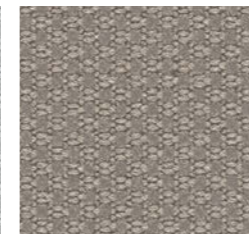
621 - Серый
Grey | Gris



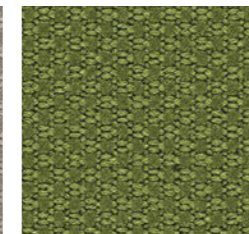
634 - Кирпичный
Brick Red | Rouge Brique



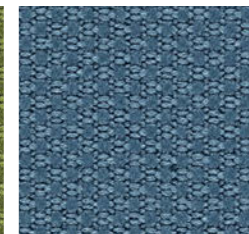
622 - Порфир
Porphyry | Porphyre



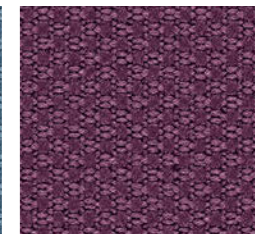
625 - Серо-бежевый
Grey Beige | Gris Tourterelle



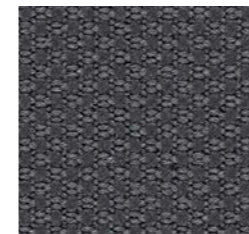
628 - Ярко-зеленый
Acid Green | Vert Acide



630 - Светло-синий
Light Blue | Bleu Clair



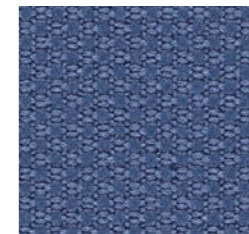
635 - Петунья
Petunia | Pétunia



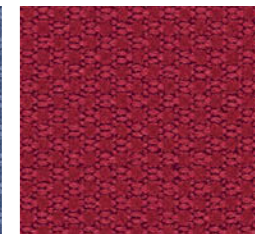
623 - Темно-серый
Dark Grey | Gris Foncé



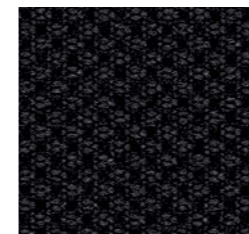
626 - Ореховый
Hazel | Noisette



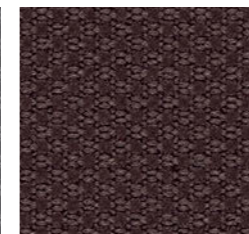
631 - Барвинок
Periwinkle | Pervenche



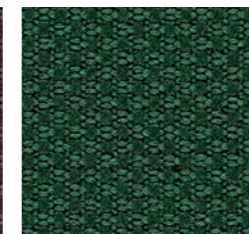
636 - Красный
Red | Rouge



624 - Черный
Black | Noir



627 - Коричневый
Brown | Marron



629 - Маслянистый
Petroleum | Pétrole



632 - Синий
Blue | Bleu



637 - Пурпурный
Amaranth | Amarante

CAT_E

LANA

75% Шерсть
25% Полиамид
Плотность: 335 gr/m²
Martindale 100.000 cicli

75% Wool
25% Polyamide
Weight: 335 gr/m²
Martindale 100.000 turns

75% Laine
25% Polyamide
Poids: 335 gr/m²
Martindale 100.000 cycles



649 - Арктический
Arctic | Arctique



642 - Серый Чикаго
Light Grey | Gris Clair



645 - Серо-бежевый
Grey Beige | Gris Tourterelle



650 - Малибу
Malibu | Malibu



653 - Красно-коричневый
Russet | Rouille



643 - Темно-серый
Dark Grey | Gris Foncé



647 - Ярко-зеленый
Acid Green | Vert Acide



651 - Барвинок
Periwinkle | Pervenche



654 - Кирпичный
Brick Red | Rouge Brique



646 - Коричневый
Brown | Marron



648 - Зеленый мох
Moss Green | Vert Mousse



652 - Темно-синий
Navy Blue | Bleu Aviateur



655 - Ярко-красный
Fire Red | Rouge Feu



644 - Дымчатый
Smoke | Fumée

CAT_E

CRAZY by Flukso

80% ПВХ
18% Полиэстер
2% Волокно ПУ
Плотность: 600 gr/m²
Abrasione 50.000 cicli
Ignifugo classe 1

80% PVC
18% Polyester
2% Polyurethane fiber
Weight: 600 gr/m²
Abrasion 50.000 turns
Fire-retardant class 1 (one)

80% PVC
18% Polyester
2% Fibres de polyuréthane
Poids: 600 gr/m²
Abrasion 50.000 cycles
Ignifuge classe 1



660 - Белый
White | Blanc



661 - Серый
Grey | Gris



663 - Бежевый
Beige | Beige



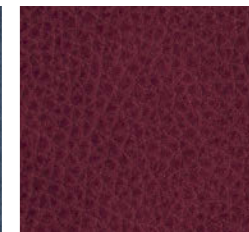
665 - Олива
Olive | Olive



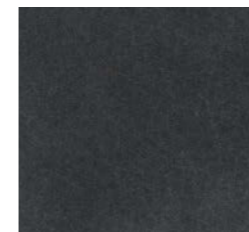
664 - Табачный
Tobacco | Tabac



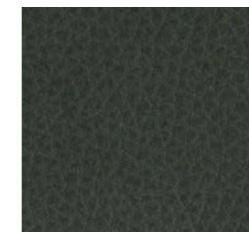
662 - Темно-синий
Navy Blue | Bleu Aviateur



669 - Красный
Red | Rouge



662 - Графит
Graphite | Graphite



666 - Водоросли
Seaweed | Algue



668 - Синий
Blue | Bleu



670 - Красное вино
Wine Red | Rouge Vin

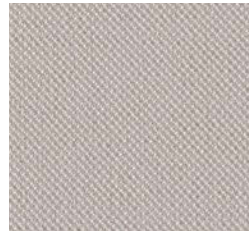
CAT_F

TAYLOR F.R. by Flukso

100% Poliestere
Peso: 330 gr/m²
Martindale 60.000 cicli
Ignifugo classe 1

100% Polyester
Weight: 330 gr/m²
Martindale 60.000 turns
Fire-retardant class 1 (one)

100% Polyester
Poids: 330 gr/m²
Martindale 60.000 cycles
Ignifuge classe 1



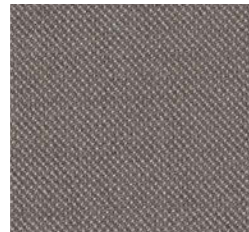
689 - Известняк
Marl | Marne



699 - Охра
Ocher | Ocre



690 - Темно-серый
Dark Grey | Gris Foncé



693 - Серо-бежевый
Grey Beige | Gris Tourterelle



695 - Олива
Olive | Olive



700 - Кирпичный
Brick Red | Rouge Brique



701 - Слива
Plum | Prune



691 - Графит
Graphite | Graphite



697 - Темно-синий
Navy Blue | Bleu Aviateur



702 - Красный
Red | Rouge



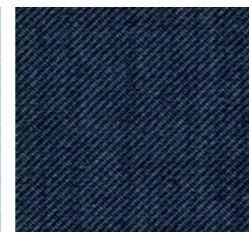
692 - Черный
Black | Noir



694 - Табачный
Tobacco | Tabac



696 - Маслянистый
Petroleum | Pétrole



698 - Ночной синий
Night Blue | Bleu Nuit



703 - Красное вино
Wine Red | Rouge Vin

CHAIRS_ 012

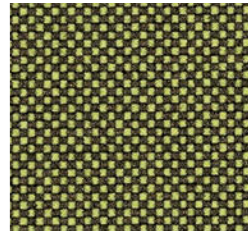
CAT_G

GO CHECK by Gabriel

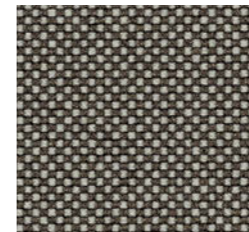
100% Trevira CS
Peso: 310 gr/m²
Martindale 80.000 cicli
Ignifugo classe 1

100% Trevira CS
Weight: 310 gr/m²
Martindale 80.000 turns
Fire-retardant class 1 (one)

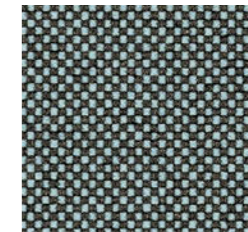
100% Trevira CS
Poids: 310 gr/m²
Martindale 80.000 cycles
Ignifuge classe 1



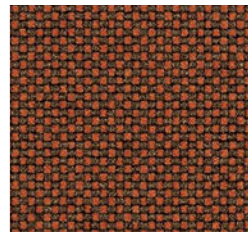
748 - Желтый
Yellow | Jaune



738 - Бежевый
Beige | Beige



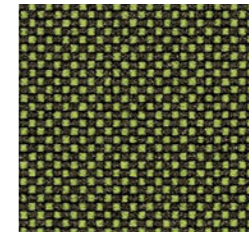
744 - Лазурь
Azure | Azur



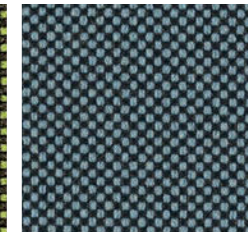
749 - Оранжевый
Orange | Orange



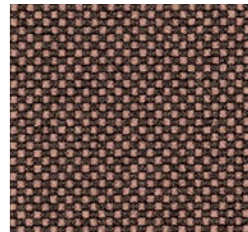
739 - Тина
Mud | Boue



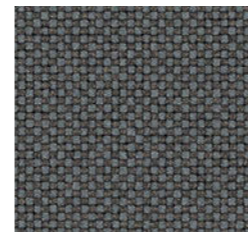
741 - Зеленый
Green | Vert



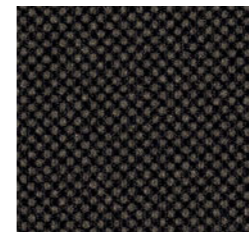
745 - Бирюзовый
Turquoise | Turquoise



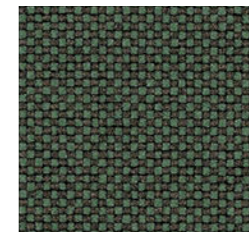
750 - Персик
Peach | Pêche



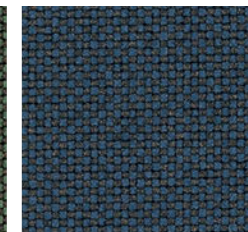
736 - Серый
Grey | Gris



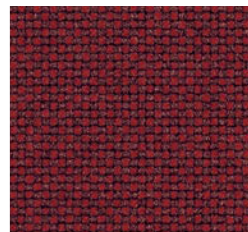
740 - Какао
Cocoa | Cacao



742 - Газон
Lawn | Pelouse



746 - Морской
Sea | Mer



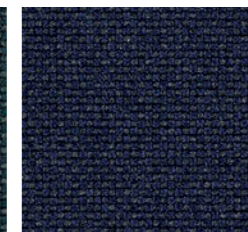
751 - Красный
Red | Rouge



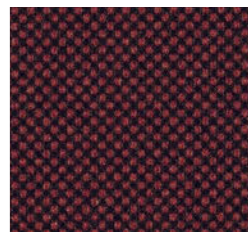
737 - Черный
Black | Noir



743 - Бутылочный
Bottle | Bouteille



747 - Синий
Blue | Bleu



752 - Пурпурный
Amaranth | Amarante

CHAIRS_ 013

Распечатка является примером и может немного отличаться от фактического продукта
The printout is an example and may differ slightly from the actual product | L'impression a caractère indicatif et pourrait différer de la réalité

CAT_G

RUNNER by Gabriel

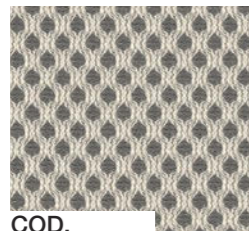
100% Полистер
Плотность: 319 gr/m²
Martindale 70.000 cicli
Ignifuge classe 1

100% Polyester
Weight: 319 gr/m²
Martindale 70.000 turns
Fire-retardant class 1 (one)

100% Polyester
Poids: 319 gr/m²
Martindale 70.000 cycles
Ignifuge classe 1



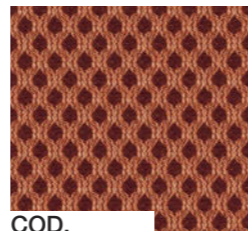
757 - Белый
White | Blanc



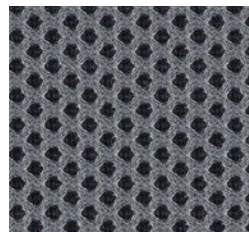
COD.
761 - Бежевый
Beige | Beige



COD.
763 - Зеленый
Green | Vert



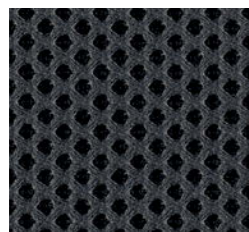
COD.
767 - Оранжевый
Orange | Orange



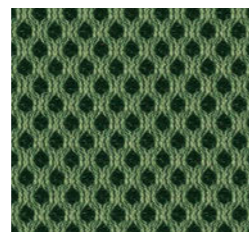
758 - Стальной
Steel | Acier



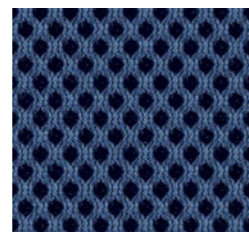
765 - Бирюзовый
Turquoise | Turquoise



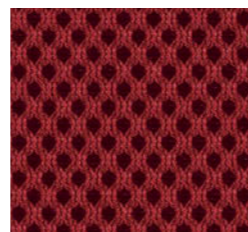
759 - Графит
Graphite | Graphite



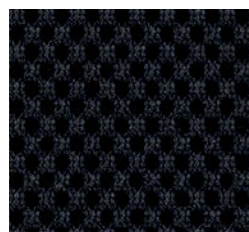
764 - Луайка
Lawn | Pelouse



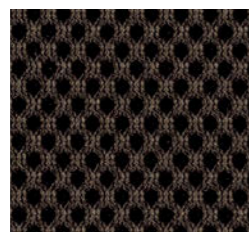
766 - Морской
Sea | Mer



768 - Красный
Red | Rouge



760 - Черный
Black | Noir



762 - Коричневый
Brown | Marron

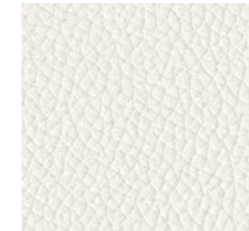
CAT_H

PELLE

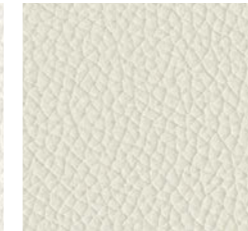
100% Кожа коровья,
шлифованная
Толщина 0,8 - 1,0 mm.
Возможные царапины и
следы на коже должны
рассматриваться не как
недостатки, а как
гарантия ее качества и
подлинности.

100% cowhide,
sanded and printed.
Thickness 0.8 - 1.0 mm.
Possible leather scratches
and marks are not to be
considered imperfections but
a guarantee of its quality and
authenticity.

100% cuire de bovins,
poncé et imprimé.
Épaisseur: 0,8 - 1,0 mm.
Les éventuelles imperfections,
égratignures ou cicatrices
présentes dans le cuir ne
sont pas des défauts, mais
des marques naturelles, une
garantie de l'authenticité
du vraicuir.



773 - Белый
White | Blanc



777 - Молочный
Milk | Lait



787 - Ананас
Pineapple | Ananas



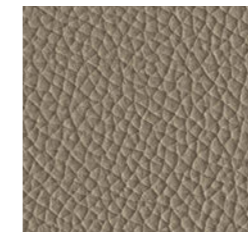
774 - Вода
Water | Eau



784 - Свинец
Lead | Plomb



788 - Оранжевый
Orange | Orange



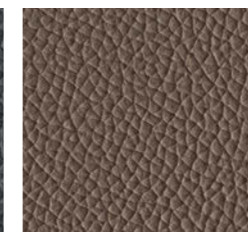
778 - Камень
Stone | Pierre



781 - Лайм
Lime | Lime



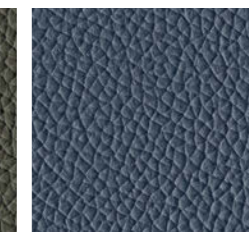
775 - Шифер
Slate | Ardoise



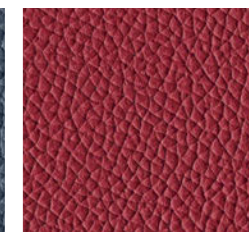
779 - Шлам
Mud | Boue



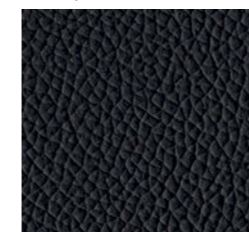
782 - Зеленый мох
Moss Green | Vert Mousse



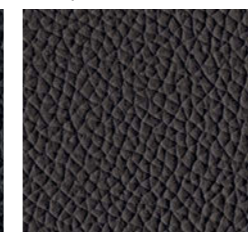
785 - Ночной синий
Night Blue | Bleu Nuit



789 - Красный
Red | Rouge



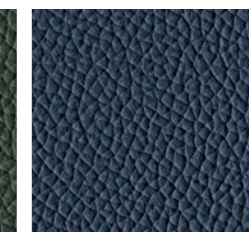
776 - Черный
Black | Noir



780 - Темно-коричневый
Dark Brown | Marron Foncé



783 - Темно-зеленый
Dark Green | Vert Foncé



786 - Океан
Ocean | Océan



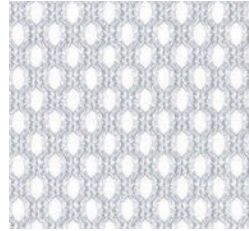
790 - Гранат
Garnet | Grenat

Распечатка является примером и может немного отличаться от фактического продукта
The printout is an example and may differ slightly from the actual product | L'impression a caractère indicatif et pourrait différer de la réalité

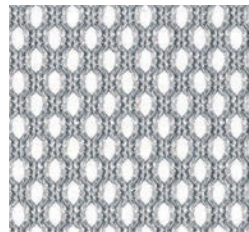
RETE_ R1

×

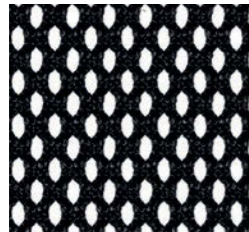
RETE ROUND



301 - Белый
White | Blanc

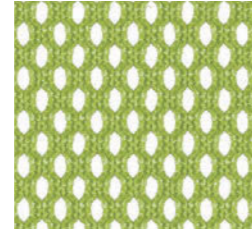


302 - Серый
Grey | Gris



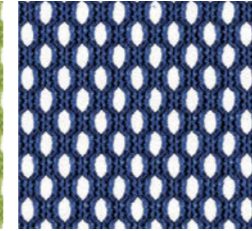
303 - Черный
Black | Noir

100% Полистер
Плотность: 510 gr/m²
Martindale 60.000 cicli



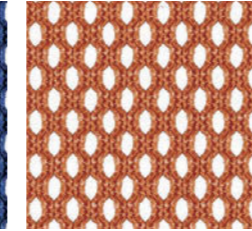
308 - Зеленый
Green | Vert

100% Polyester
Weight: 510 gr/m²
Martindale 60.000 turns

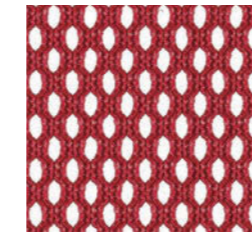


305 - Василек
Bluette | Bluette

100% Polyester
Poids: 510 gr/m²
Martindale 60.000 cycles



306 - Оранжевый
Orange | Orange



307 - Красный
Red | Rouge

×

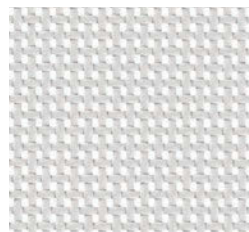
только для спинки
for backrest only
seulement pour dossier

SISTEMA RETE
CAST RETE
F03 RETE

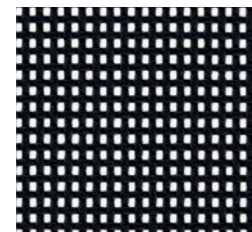
RETE_ R2

△

RETE BREAK

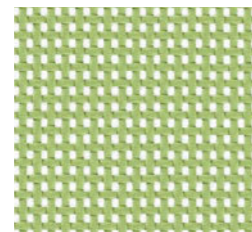


310 - Белый
White | Blanc



312 - Черный
Black | Noir

70% ПВХ
30% Полистер
Плотность: 560 gr/m²
Martindale 100.000 cicli



311 - Зеленый
Green | Vert

70% PVC
30% Polyester
Weight: 560 gr/m²
Martindale 100.000 turns

70% PVC
30% Polyester
Poids: 560 gr/m²
Martindale 100.000 cycles

△

только для спинки
for backrest only
seulement pour dossier

HELLÒ RETE
CIÀK RETE

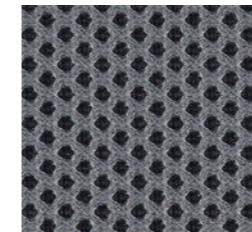
RETE_ R3

○

RETE GABRIEL



757 - Белый
White | Blanc



758 - Сталь
Steel | Acier



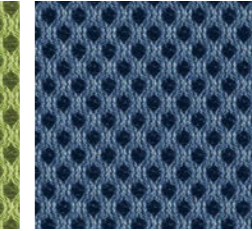
759 - Графит
Graphite | Graphite

100% Полистер
Плотность: 319 gr/m²
Martindale 70.000 cicli
Ignifugo classe 1



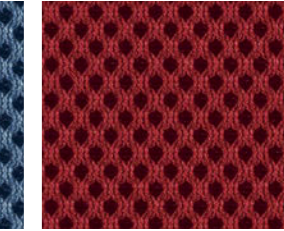
763 - Зеленый
Green | Vert

100% Polyester
Weight: 319 gr/m²
Martindale 70.000 turns
Fire-retardant class 1 (one)



765 - Бирюзовый
Turquoise | Turquoise

100% Polyester
Poids: 319 gr/m²
Martindale 70.000 cycles
Ignifuge classe 1



768 - Красный
Red | Rouge

○

только для спинки
for backrest only
seulement pour dossier

OSCAR RETE

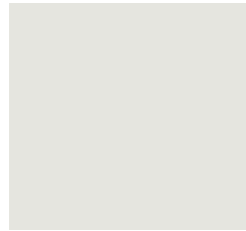
TEC_ T1

Mod. F01

100% Полипропилен

100% Polypropylene

100% Polypropylene



912 - Белый
White | Blanc
(RAL 9003)



940 - Зеленый
Green | Vert
(PANTONE 7495
EC)



913 - Красный
Red | Rouge
(RAL 3000)



950 - Черный
Black | Noir
(RAL 9005)

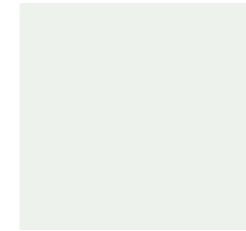
TEC_ T3

Mod. F03

100% Полипропилен

100% Polypropylene

100% Polypropylene



912 - Белый
White | Blanc



950 - Черный
Black | Noir

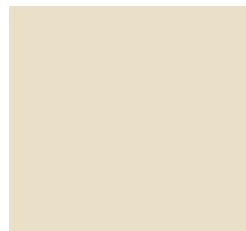
TEC_ T2

Mod. F02

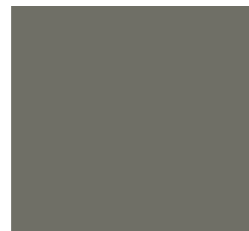
100% Полипропилен

100% Polypropylene

100% Polypropylene



916 - Слоновая кость
Ivory | Ivoire
(RAL 1013)



917 - Серо-бежевый
Grey Beige | Gris Tourterelle
(RAL 7003)



918 - Желтый
Yellow | Jaune
(RAL 1012)

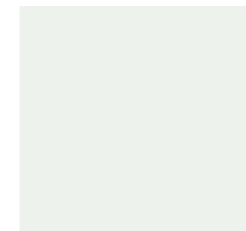
TEC_ T4

Mod. F04

100% Полипропилен

100% Polypropylene

100% Polypropylene



912 - Белый
White | Blanc



914 - Кремовый
Cream | Crème



915 - Маслянистый
Petroleum | Pétrole



950 - Черный
Black | Noir

ДЕРЕВО | WOOD | BOIS

○ Меламин
Melamine
Melamine
△ 3D Foil



МЕТАЛЛ | METAL | MÉTAL



СТЕКЛО | GLASS | VITRE



AD_

Arch. Paolo Pampanoni

Rendering_

Matic®

Foto_

lucidiffuse.it

Progetto grafico_

d+a

Fotolito_

Selecolor Firenze

Stampa_

Grafiche Martintype



Las Mobili s.r.l

Via dell'Industria, n°81
64018 Tortoreto (TE) - Italy
T. +39. 0861 7831
F. +39. 0861 786851
las@las.it - www.las.it